

Opening date:
Oct. 17th



LIVENSA LIVING

— LISBOA CIDADE UNIVERSITARIA —



A close-up photograph of four diverse young women smiling and blowing colorful confetti. The confetti is in motion, creating a festive and joyful atmosphere. The women are of various ethnicities and are all looking towards the camera with happy expressions.

WHY LIVENSA?

Live a unique student experience
Like home, only better

Looking for an unforgettable college experience? Look no further! Livensa Living is the place where you dream to live.

Can you imagine waking up in the morning and preparing breakfast in your studio, taking a shower without having to queue, having a library where you can study while enjoying high-speed Wi-Fi and by the end of the day swimming in the pool?

Stop imagining! Come live with us and share all these experiences with your housemates. Here you will find a multicultural family and unique facilities for you to live comfortably, in safety and tranquillity.



Comfort

We designed all of our spaces thinking about comfort first.

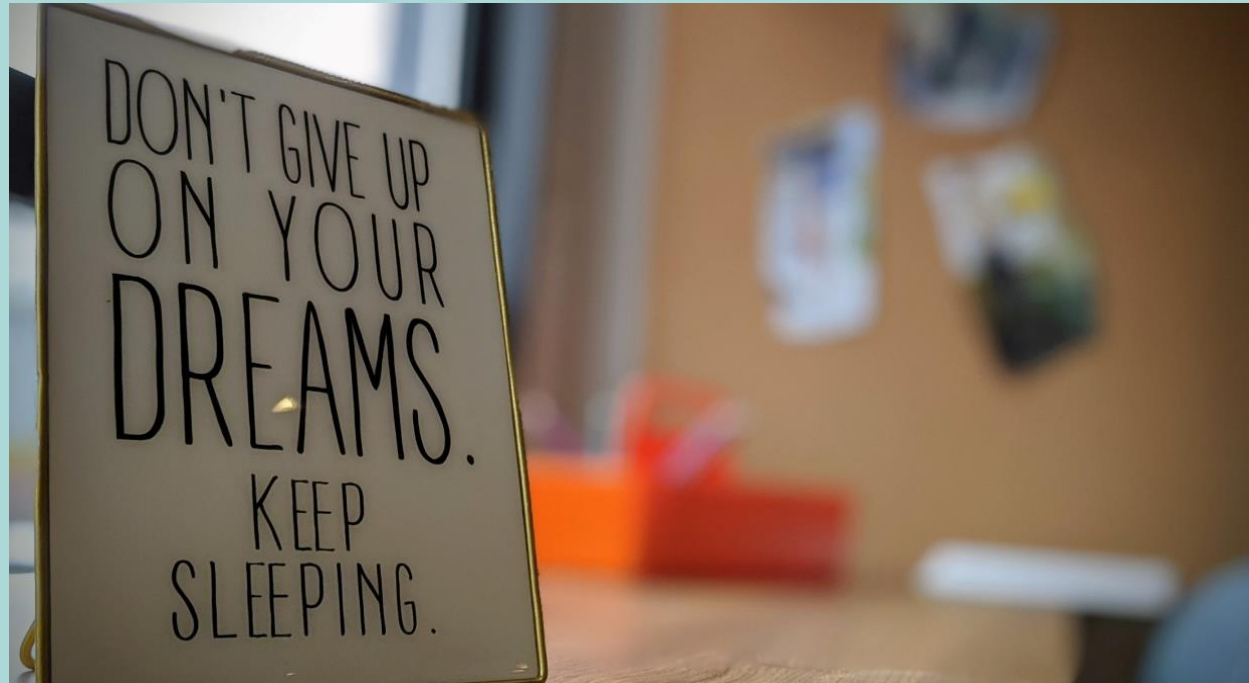
Our studios are designed for comfort and convenience, featuring your own mini-kitchen, en suite bathroom, work desk, wardrobe and storage space, high speed Wi-Fi and air conditioning.

The stylish communal spaces enable you to study in peace, do group assignments, have fun, relax and socialise. Enjoy the cinema, library, dining rooms, gym, games area, work spaces, swimming pool and much more! Choose your favourite area according to your mood.



Safety

Safety is our main priority! All residences are equipped with video surveillance systems and electronic access control. Our reception and private security team are at the residence day and night, 365 days a year.



All included

Living away from home may be seen as a challenge, but at Livensa Living we make your life easier! All our prices include electricity, water, internet and use of all facilities, such as gym, swimming pool, cinema, games room and much more.



Location

We choose our locations close to the main universities and nearby public transport network for you to freely enjoy your student life.



Community

Our team prepares the best events to make you feel at home, only better. Cinema sessions, group sports classes, conferences and, of course, you can't miss our themed parties!

01. Our Facilities

STUDIOS

Studios with 18 sqm (single and double).

The single rooms include a full kitchen (induction hob, oven, microwave, fridge with freezer) and a private bathroom.

The double rooms include kitchen countertop (with microwave and fridge with freezer) and bathroom. Complete common kitchens are also available.

All rooms include:

- Individually adjustable air conditioning (hot and cold)
- Individual television
- Bed with high quality mattress (120cm wide in singles and 90cm wide in doubles)
- Closet
- Chair and desk with drawers and storage
- Traditional and USB plugs



01. Our Facilities

COMMON AREAS

- Swimming Pool
- Sauna
- Private Gym and spaces for Yoga and Pilates
- Two large private rooms (with kitchen, dining room and living room) for meetings with family and friends
- Study and/or group work rooms
- Library
- Gaming area with table footbal, ping-pong, pool table, ...
- Multimedia cinema and audiovisual room
- Indoor and outdoor leisure areas
- Private car park with direct access to the building





02. Our Services

In addition to a complete program of activities that will help you make friends since the beginning, at Livensa Living you will find services designed to make your life easier:

- Support from the residence team, always available, to help solve problems
- High-speed wi-fi connection
- Video surveillance system and reception 24/7
- Self-service laundry
- Maintenance service
- Room cleaning service upon request
- Mail and order reception service
- Copying and printing services



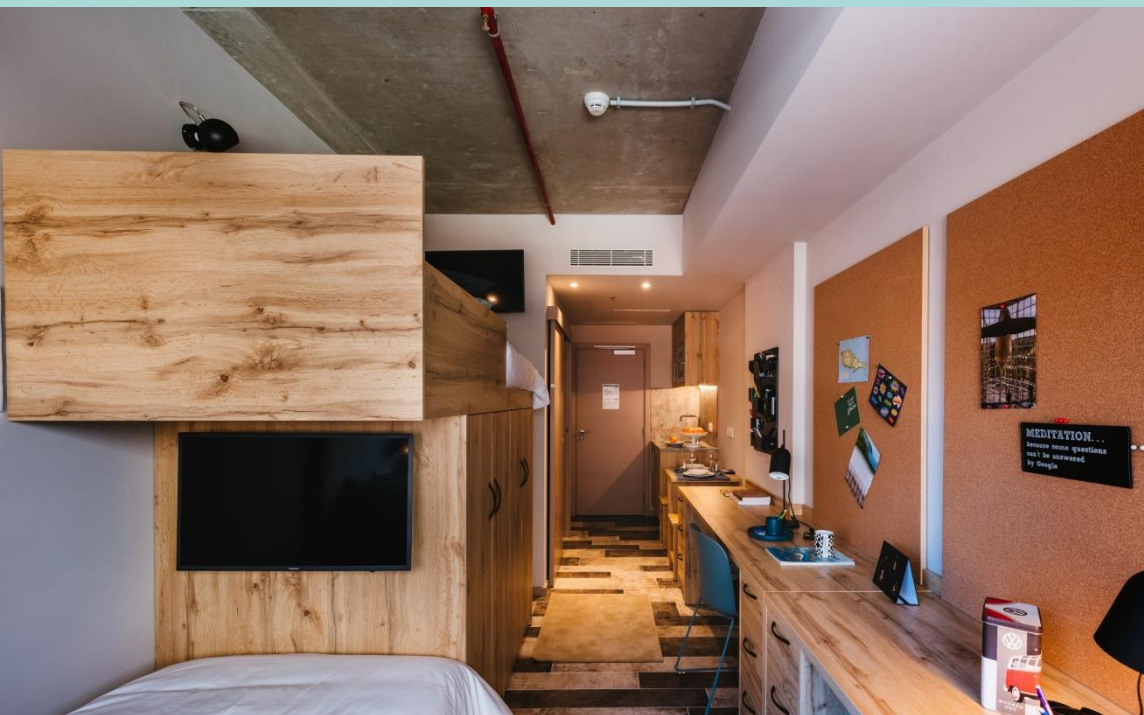




Prices 2020/2021

	Academic year (> 9 months)	Academic semester (4,5 to 9 months)	Short stay (2 to 4,5 months)
	●	●	●
Studio Standard	695 €	765 €	841 €
Studio w/ balcony	717 €	788 €	867 €
Studio Standard Upper Floor	764 €	841 €	925 €
Studio w/ terrace	769 €	845 €	930 €
Studio w/ large terrace	835 €	919 €	1,010 €
Studio w/ extra large terrace	897 €	987 €	1,085 €
Suite Premium	1,364 €	-	-
Studio accessible	1,540 €	-	-

* Room monthly (30 days) rates (legal rate in force, with water, electricity and internet expenses included)



Prices 2020/2021

	Academic year (> 9 months)	Academic semester (4,5 to 9 months)	Short stay (2 to 4,5 months)
Twin Standard	488 €	537 €	-
Twin w/ balcony	528 €	581 €	-
Twin w/ terrace	583 €	641 €	705 €

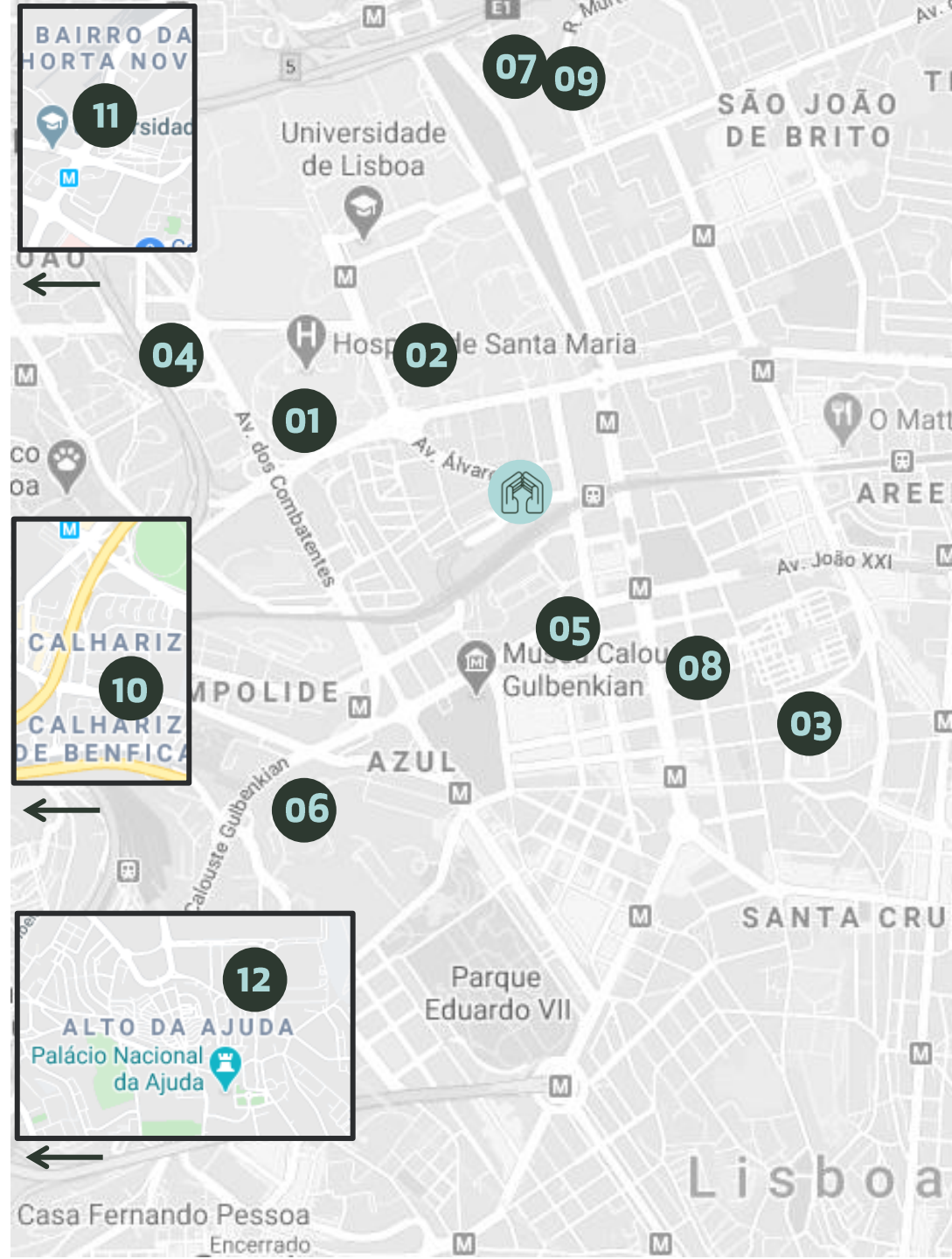
* Room monthly (30 days) rates (legal rate in force, with water, electricity and internet expenses included)

** Prices per person

03. Localização



- | | |
|---|---|
| 01 Univ. Lisboa - 1,2 km
(Medicine, Law, Letters, Psychology, Dentists, Pharmacy) | 07 Lusófona - 2,0 km |
| 02 ISCTE - 1,0 km | 08 ISCAL - 1,4 km |
| 03 Inst. Sup. Técnico - 2,4 km | 09 ISG - 2,2 km |
| 04 UCP - 1,7 km | 10 Politécnico - 4,5 km
(ESCS / ESEL / ESML) |
| 05 Univ. Nova FCSH - 1,0 km | 11 Europeia University - 4,5 km |
| 06 Univ. Nova - 2,0 km
(IMS, Law) | 12 UL Ajuda university polo - 6,0 km
(Veterinary, Architecture, ISCS) |



03. Localização

Public Transportation

Metro Station: 450 m

Train Station: 450 m

Bus stop: 200m

Nearest Shopping Center

Campo Pequeno: 700m

- Supermarket
- Food Court
- Clothing stores

Points of interest

S. Maria hospital: 1,3 km

Pharmacy: 550 m

Police Station: 1 km

Lisbon Airport : 5 km

Beach: 17 km

Nearest Supermarket

Lidl : 450 m

Continente Bom dia: 850 m



04. Testimonials

WHAT OUR RESIDENTS SAY



GABRIEL · 18 YEARS · PORTUGAL

FOR ME LIVENSA IS **INDEPENDENCE**

WHAT OUR RESIDENTS SAY



ELISA · 20 YEARS · ITALY

STAFF AT LIVENSA ARE VERY SUPPORTIVE AND I FEEL SUPER SAFE HERE


WHAT OUR RESIDENTS SAY



THALES · 22 YEARS · BRAZIL

I CHOSE LIVENSA FOR THE POSSIBILITY OF **NETWORKING AND TO LEARN NEW LANGUAGES**. LIVENSA IS **UNION**.


WHAT OUR RESIDENTS SAY



INGRID · 22 YEARS · SPAIN

LIVENSA IS LIKE A **SECOND HOME**, I FEEL IT SINCE MY FIRST DAY HERE.


WHAT OUR RESIDENTS SAY



BORIS · 22 YEARS · FRANCE

AT LIVENSA YOU'LL **FEEL LIKE HOME**. HERE YOU CAN STUDY AND LIVE WITH **TRANQUILITY AND SAFETY**.

WHAT OUR RESIDENTS SAY



TIAGO · 25 YEARS · BRAZIL

WHAT I LIKE THE MOST IS OUR COMMON SPACES. THE DINING ROOM AND OUR **TOTALLY EQUIPPED GYM**.

WHAT OUR RESIDENTS SAY



MOISÉS · 21 YEARS · SPAIN

LIVENSA IS A SECOND HOME WHERE **EVERYBODY HELPS EACH OTHER**.

WHAT OUR RESIDENTS SAY



PEDRO · 18 YEARS · PORTUGAL

LIVANSA'S STAFF WORK LIKE A TEAM SO THAT YOU CAN **FEEL COMFORTABLE AND AT HOME**.

05. Network & Contacts

The Livensa Living student residence is part of a global project from several locations in Portugal and Spain, offering exceptional quality accommodation for students at affordable prices in the main university cities.

Spain

- Barcelona
- Granada
- Malaga
- Donostia-Saint Sebastian
- Madrid
- Valencia
- Salamanca
- Pamplona
- Bilbao
- Sevilla

Portugal

- Porto
- Lisbon
- Coimbra



05. Network & Contacts

R. Sousa Lopes 247,
1600-131 Lisboa, Portugal

Phone: +351 211 156 255
WhatsApp: +34 608 01 55 33

living@livensaliving.com

www.livensaliving.com

FOLLOW US!



@LivensaLivingPortugal



@livensa_studenthousing_pt



LIVENSALIVING

